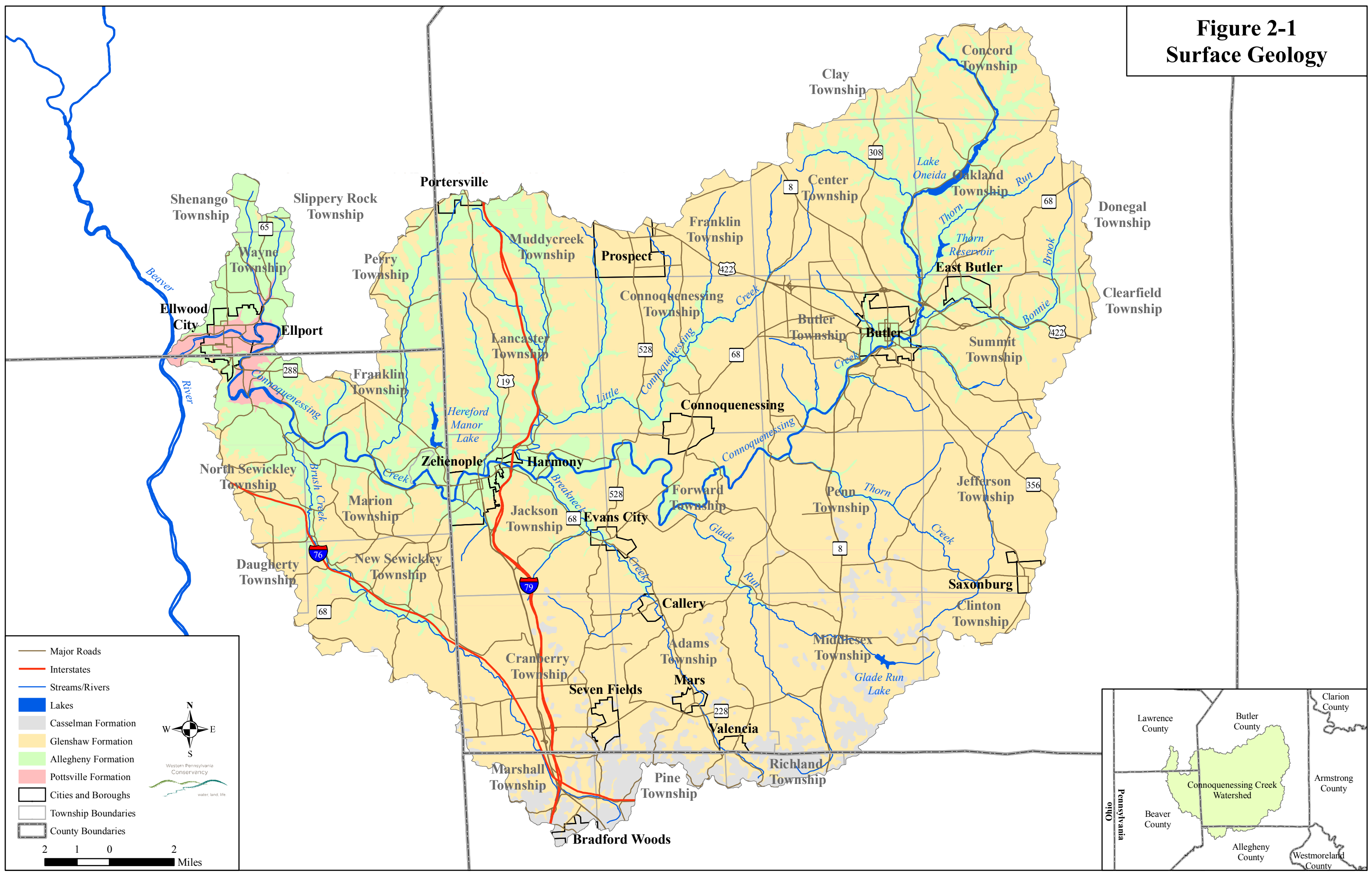


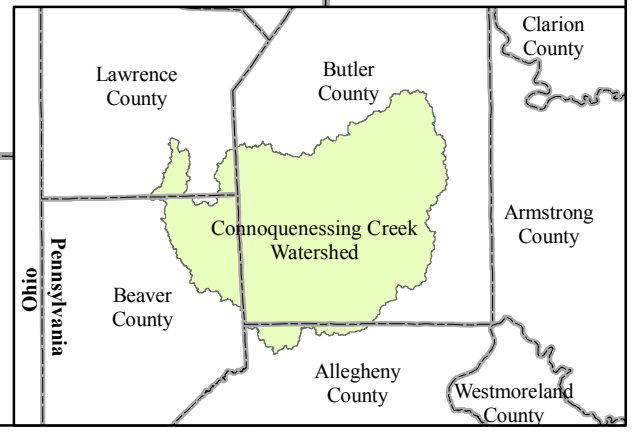
**Figure 2-1
Surface Geology**



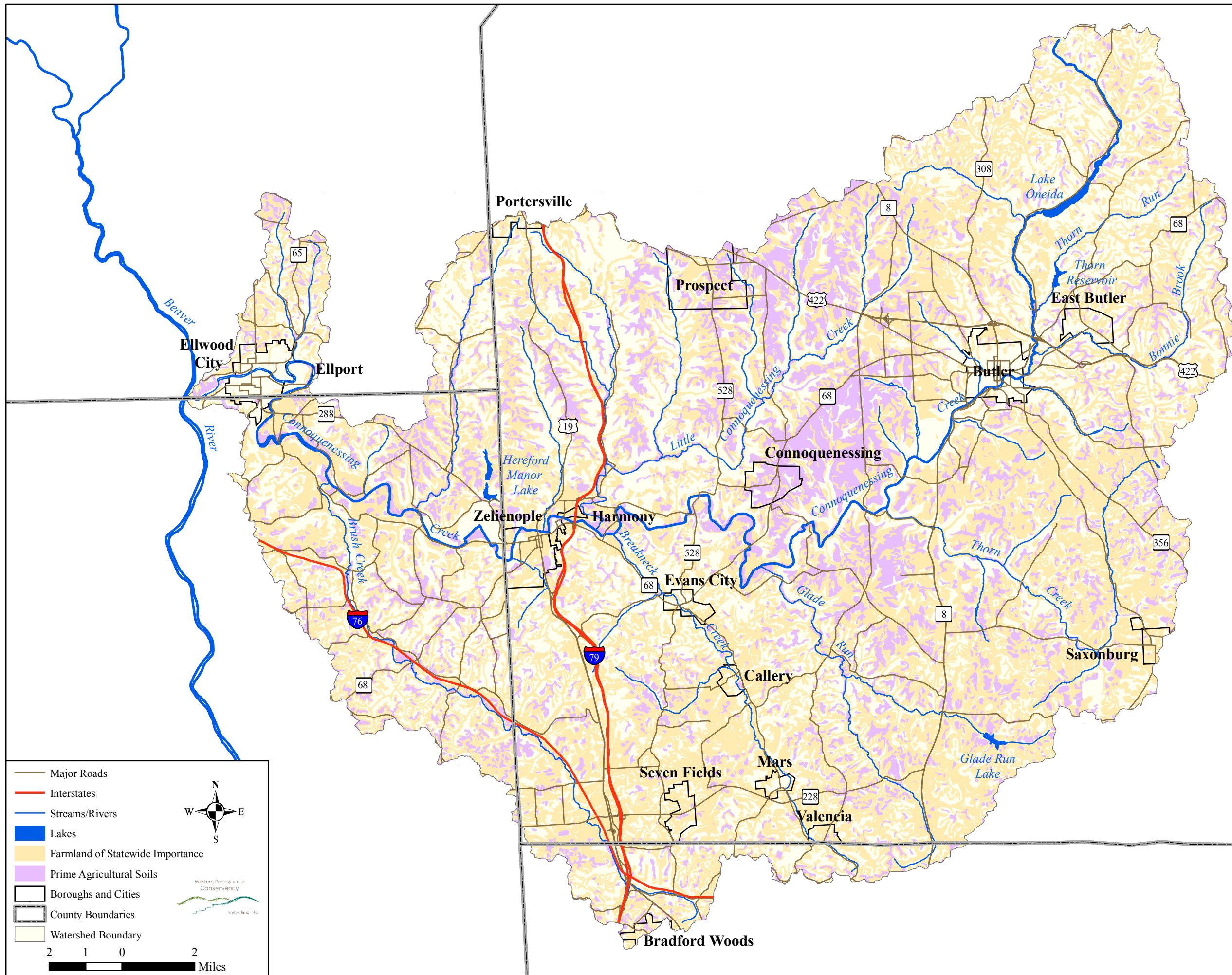
— Major Roads
 — Interstates
 — Streams/Rivers
 ■ Lakes
 ■ Casselman Formation
 ■ Glenshaw Formation
 ■ Allegheny Formation
 ■ Pottsville Formation
 □ Cities and Boroughs
 □ Township Boundaries
 □ County Boundaries

2 1 0 2
 Miles

N
 W E
 S
 Western Pennsylvania
 Conservancy
 water, land, life



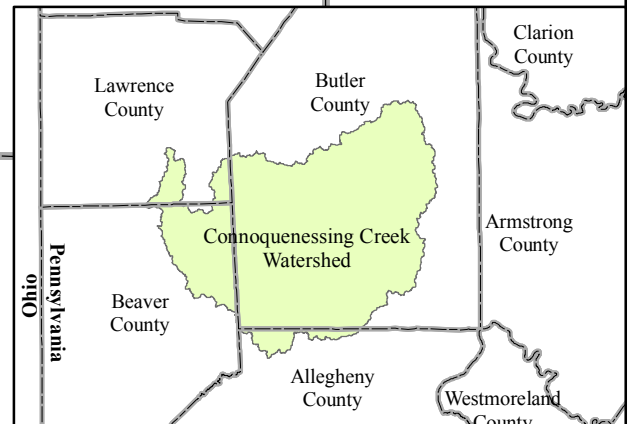
**Figure 2-2
Agricultural Soils**



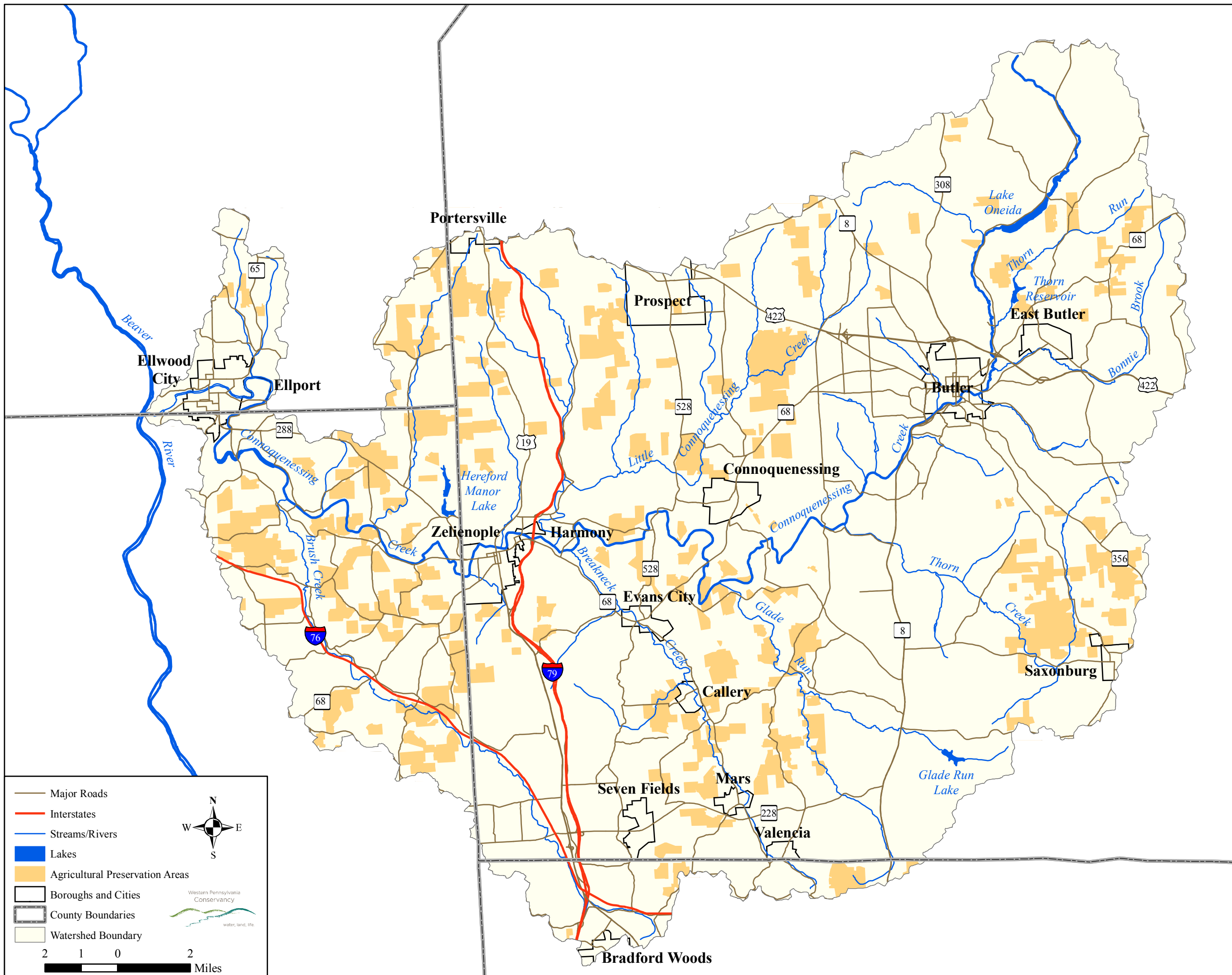
- Major Roads
- Interstates
- Streams/Rivers
- Lakes
- Farmland of Statewide Importance
- Prime Agricultural Soils
- Boroughs and Cities
- County Boundaries
- Watershed Boundary

Miles

Western Pennsylvania Conservancy



**Figure 2-4
Agricultural
Preservation Areas**

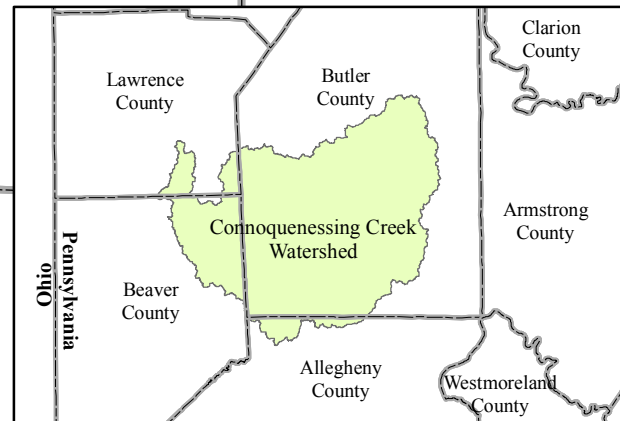


— Major Roads
 — Interstates
 — Streams/Rivers
 — Lakes
 — Agricultural Preservation Areas
 — Boroughs and Cities
 — County Boundaries
 — Watershed Boundary

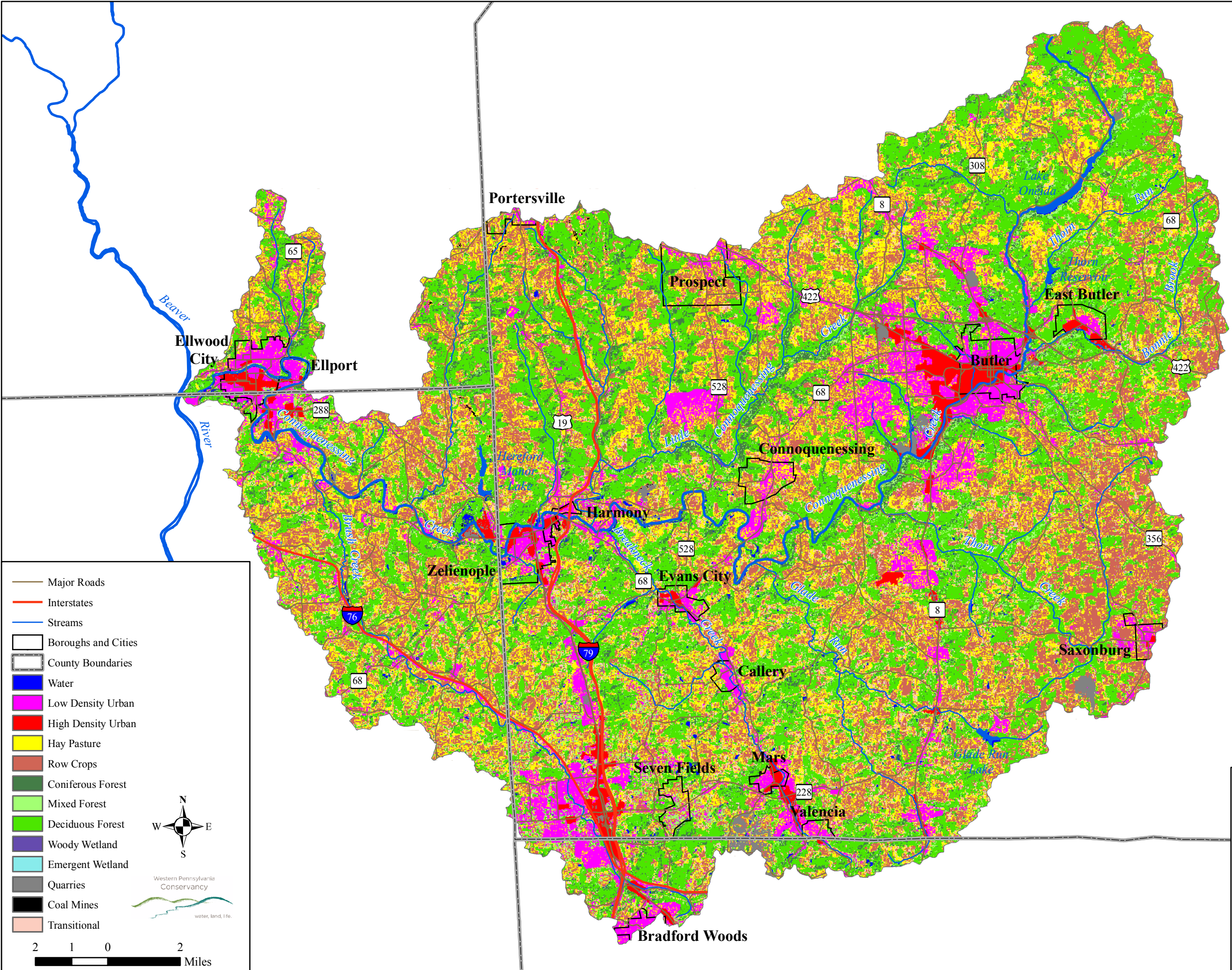
West Penn
 Conservancy
 water, land, life

N
 W — E
 S

2 1 0 2
 Miles



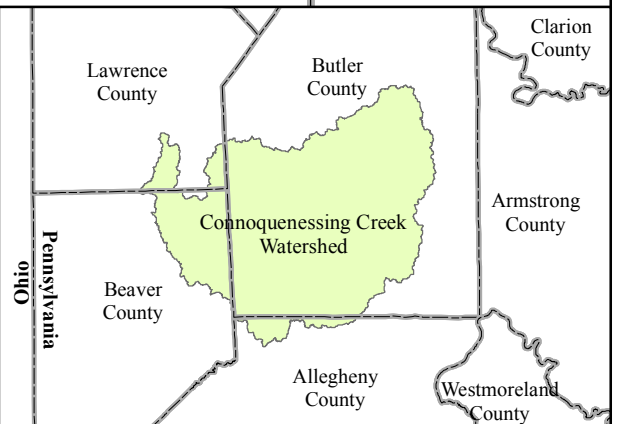
**Figure 2-5
Land Use**



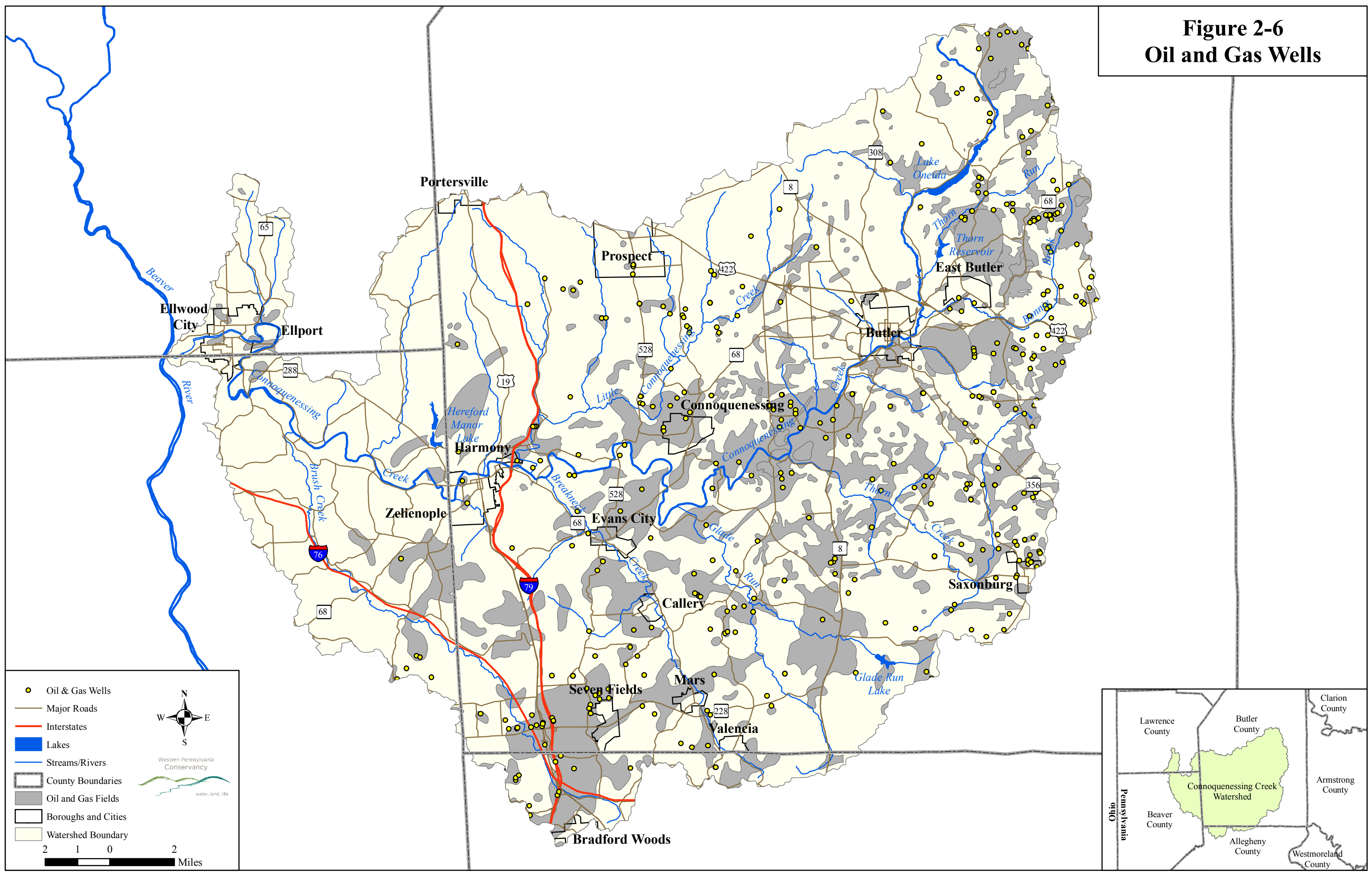
- Major Roads
- Interstates
- Streams
- Boroughs and Cities
- County Boundaries
- Water
- Low Density Urban
- High Density Urban
- Hay Pasture
- Row Crops
- Coniferous Forest
- Mixed Forest
- Deciduous Forest
- Woody Wetland
- Emergent Wetland
- Quarries
- Coal Mines
- Transitional

Western Pennsylvania Conservancy
 water, land, life.

2 1 0 2 Miles



**Figure 2-6
Oil and Gas Wells**

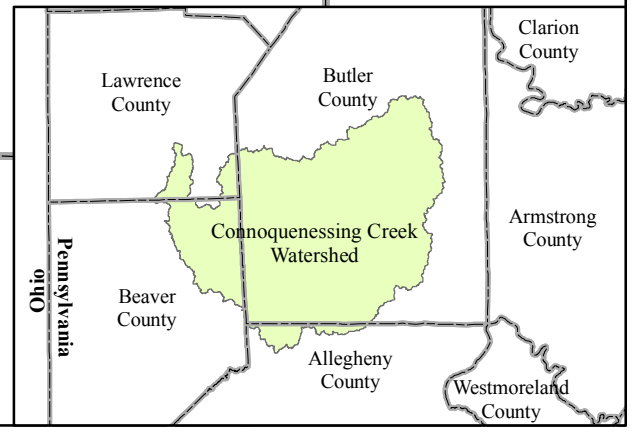


- Oil & Gas Wells
- Major Roads
- Interstates
- Lakes
- Streams/Rivers
- County Boundaries
- Oil and Gas Fields
- Boroughs and Cities
- Watershed Boundary

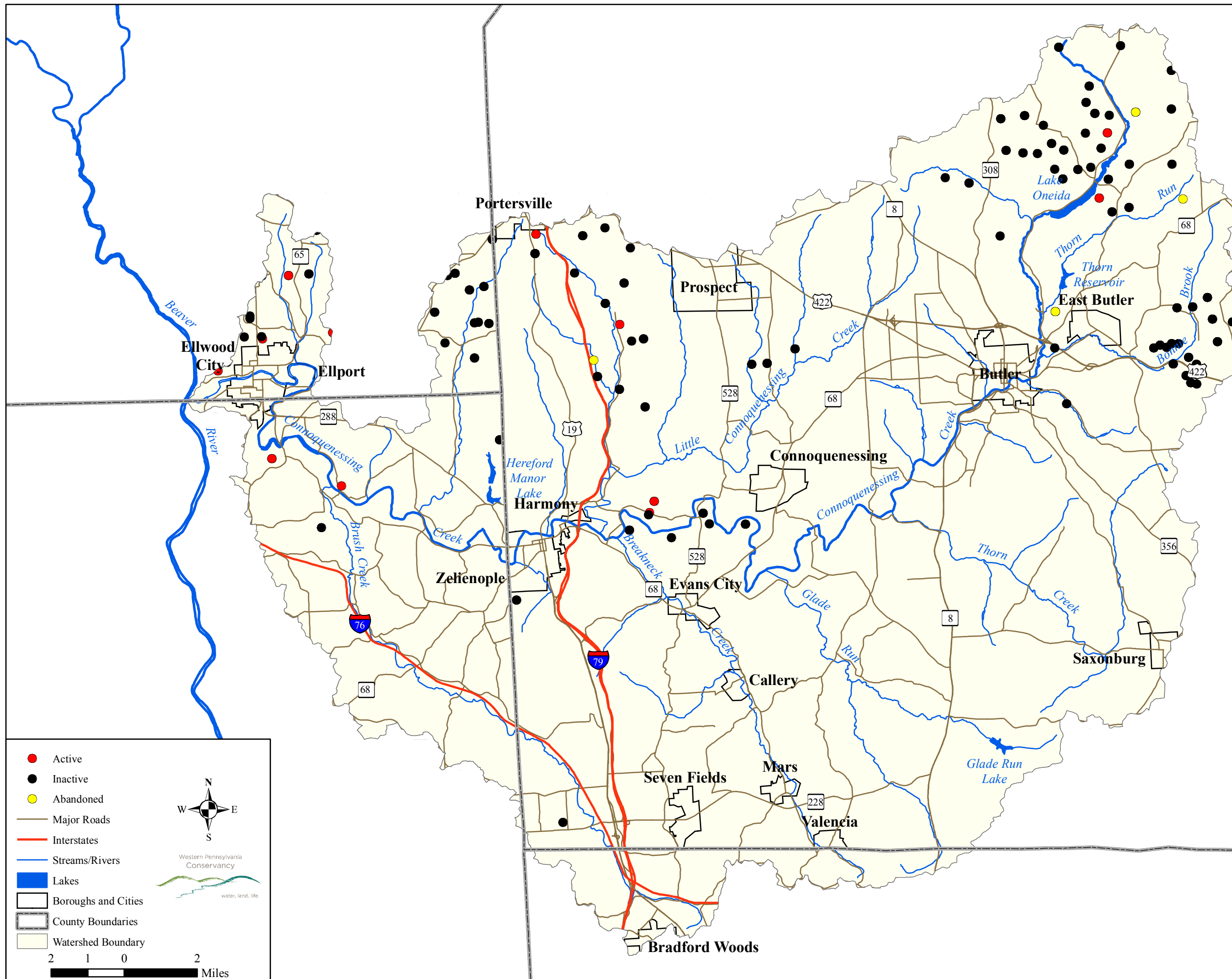
N
 W E
 S

Western Pennsylvania Conservancy
water, land, life.

2 1 0 2
Miles



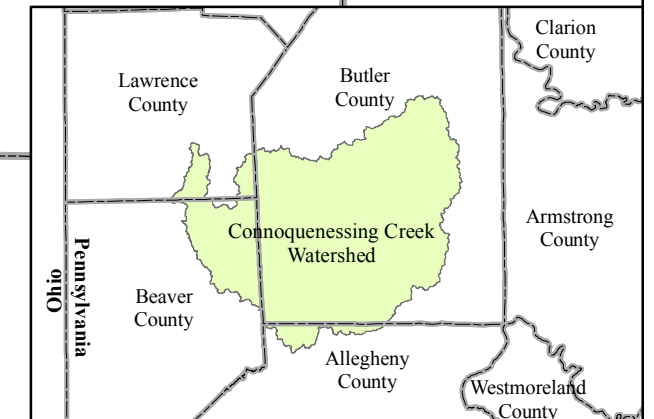
**Figure 2-7
Coal Mining Operations**



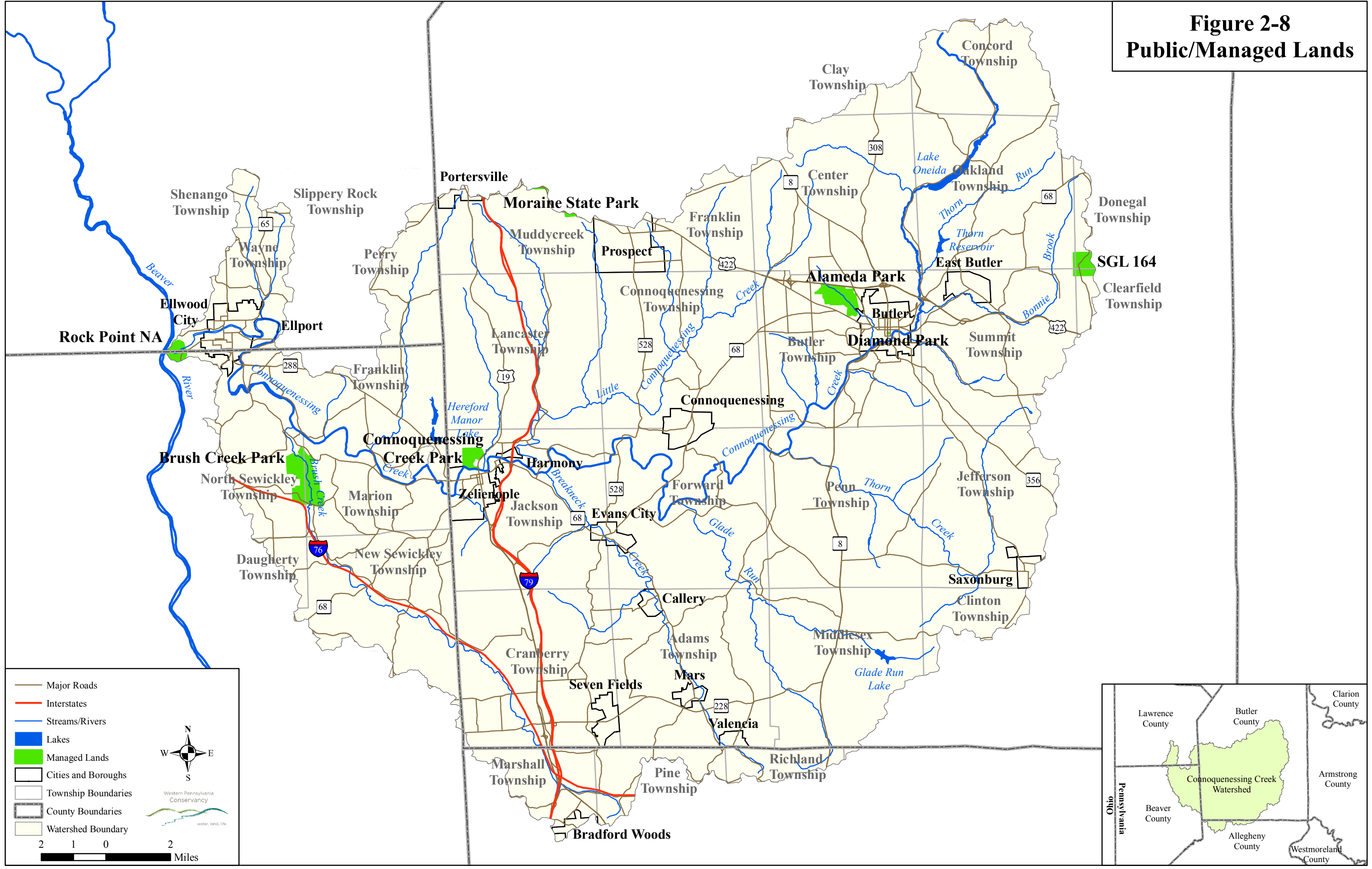
- Active
- Inactive
- Abandoned
- Major Roads
- Interstates
- Streams/Rivers
- Lakes
- Boroughs and Cities
- County Boundaries
- Watershed Boundary

2 1 0 2 Miles

Western Pennsylvania Conservancy
water, land, life.



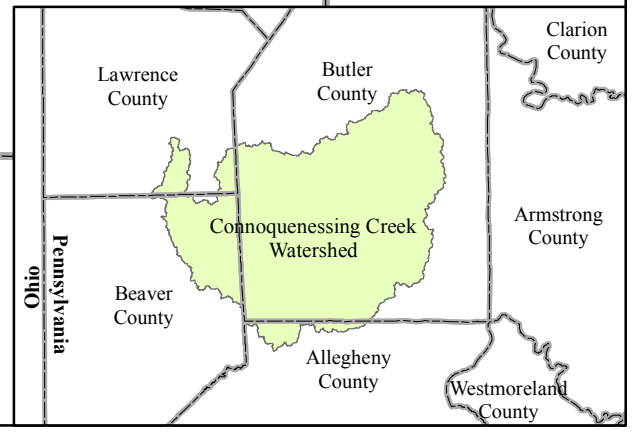
**Figure 2-8
Public/Managed Lands**



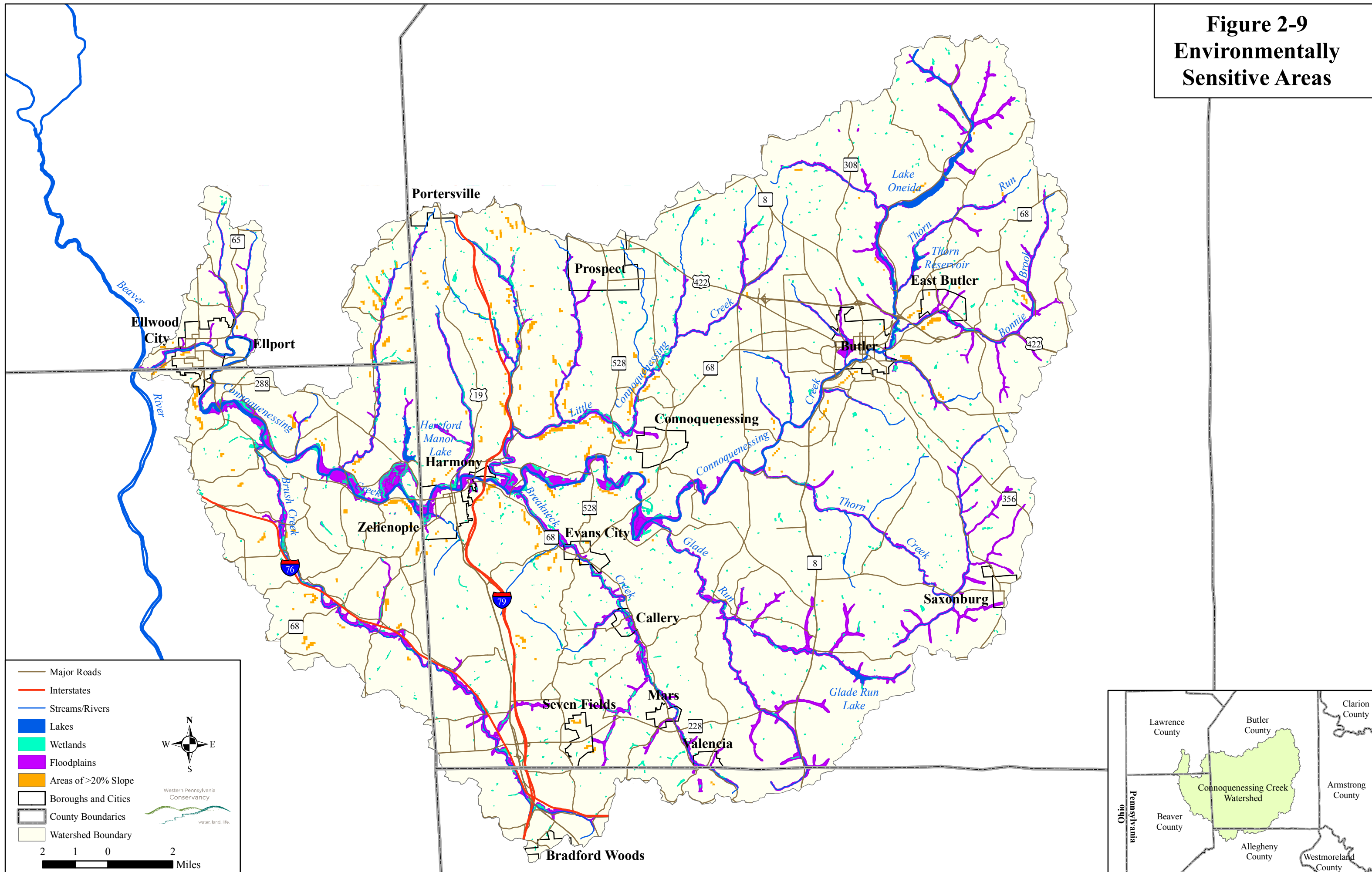
- Major Roads
- Interstates
- Streams/Rivers
- Lakes
- Managed Lands
- Cities and Boroughs
- Township Boundaries
- County Boundaries
- Watershed Boundary

Western Pennsylvania Conservancy
water, land, life

2 1 0 2 Miles



**Figure 2-9
Environmentally
Sensitive Areas**



- Major Roads
- Interstates
- Streams/Rivers
- Lakes
- Wetlands
- Floodplains
- Areas of >20% Slope
- Boroughs and Cities
- County Boundaries
- Watershed Boundary

2 1 0 2 Miles

Western Pennsylvania Conservancy
water, land, life.

